



National Company. Local Service.

DGS GROUP PLC.

SEALED UNIT CATALOGUE

DGS Group Plc. Branch Network

**Head Office (Derby)**

T: 01332 811611

E: sales@dgsgroup.co.uk

Glasgow Branch

T: 0141 9523758

E: glasgow@dgsgroup.co.uk

Newcastle Branch

T: 0191 4690988

E: newcastle@dgsgroup.co.uk

Leeds Branch

T: 0113 2526313

E: leeds@dgsgroup.co.uk

Caldicot Branch

T: 01291 430727

E: southwest@dgsgroup.co.uk

Swansea Branch

T: 01792 700555

E: swansea@dgsgroup.co.uk

Exeter Branch

T: 01392 824129

E: exeter@dgsgroup.co.uk

Maidenhead Branch

T: 01628 784971

E: southern@dgsgroup.co.uk

Brentwood Branch

T: 01277 218072

E: brentwood@dgsgroup.co.uk

Belfast Branch

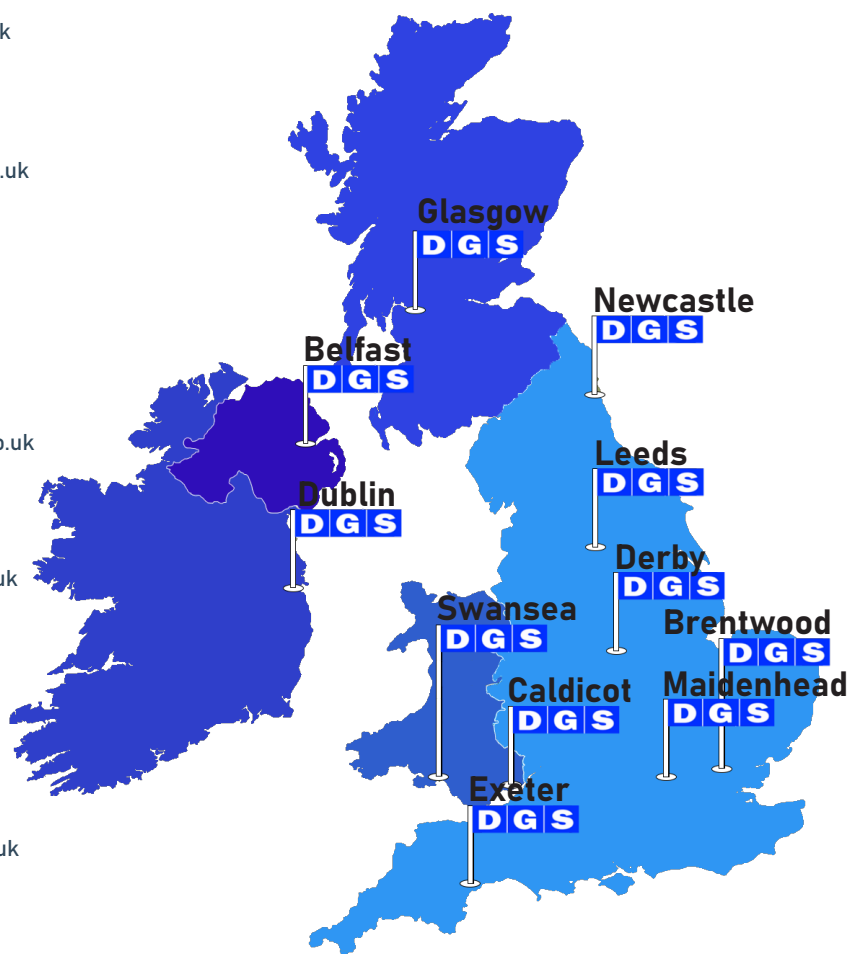
T: 028 9077 2477

E: belfast@dgsgroup.co.uk

DGS Ireland Ltd (Dublin)

T: 01 626 1055

E: dublin@dgsgroup.co.uk



All content in this catalogue is for reference and guidance only. We have taken all reasonable due care to ensure the content within our brochures and website is accurate and current but we do not accept any liability for any inaccuracy or omission.

About DGS Group Plc.



DGS Group Plc - Trusted for over 46 Years

DGS Group Plc is an independent quality manufacturer and distributor to the fenestration industry, the only company supplying ALL sectors of the window and door market.

Window Hardware **Door Hardware** **Sealed Unit** **Fitting Materials**

Since 1977 we have continued to innovate and invest.

 <p>11 branches across the UK & Ireland.</p>	 <p>12,000 plus product lines.</p>	 <p>98.9% of orders delivered on time.</p>	 <p>1,000,000 miles covered each year.</p>
 <p>12 countries exported to around the world.</p>	 <p>45 vehicles delivering across the country.</p>	 <p>6500 orders processed each month.</p>	 <p>140,000 sq. feet of warehouse & manufacturing space.</p>
 <p>2000+ Exclusive products including the complete ELITE range of hardware and furniture.</p>		 <p>Over 100,000,000 pairs! ELITE friction stays and catches manufactured in the UK and in use today.</p>	



Spacer Bar and Accessories

Multitech G Warm Edge Bar	7-8
Warm Edge Keys	9-11
Chromatech Ultra Warm Edge Bar & Keys for Larger Architectural Units	12-14
Super Spacer	15
Ferrotech Bar - (Fire Rated)	16
Aluminium Spacer Bar and Keys	17-20
Bendable Aluminium Spacer Bar and Keys	21-22
Warm Edge Duplex Keys System	23-24
Duplex Key System	25

Hotmelt and 2-Part Sealant

Hotver A+ Hotmelt	27
2 Part Sealant	28
Primary Sealant (PIB)	29

Desiccant

Glasmol Desiccant	31-32
-------------------------	-------

Decorative Products

Aluminium Georgian Bar Painted Finishes	35
Aluminium Georgian Bar Foiled Finishes	36
Aluminium Georgian Bar Tu-Tone	37
Georgian Bar Keys	38-41
Germanella P Georgian Bar	42
Lead & Accessories	43

Tapes

Cloth Tape and Protection Tape	45
Spacer Bar Tape, PIB Tape & Double Sided Tape	46

Cleaning Products - Nozzles - Pads

Glass Cleaning Products	49
Cleaning Products	50
Nozzles	51
Pads	52

Glass Tools

Pin Gun, Pins and Staples	55
Pad Lifters and Glass Cutter	56
T Square and Suction Lathe	57
Stanley Scraper, Knife and Blades	58
Measuring and Cutting	59
Glas O Meter	60

26 years

The number of years since the launch of our exclusive, own UK manufactured Elite Friction Stay



DGS Group Plc.

National Company. Local Service.

Spacer Bar & Accessories

Multitech G Warm Edge Bar

Warm Edge Keys

Chromatech Ultra Warm Edge Bar & Keys for Larger Architectural Units

Super Spacer

Ferrotech Bar - (Fire Rated)

Aluminium Spacer Bar and Keys

Bendable Aluminium Spacer Bar and Keys

Warm Edge Duplex Key System

Duplex Key System

**Products
on the website:**



The Best Thermal Performance of any Warm Edge Spacer Bar

MULTITECH G® is an innovative rigid spacer profile made of glass fibre reinforced polymer, enhanced with a special entirely metal-free transparent multilayer gas barrier foil.

Thanks to the optimal thermal performance (λ 0.125 W/M²K), of this multilayer barrier, which is very thin but exceptionally durable, MULTITECH G® can be ranked as the warm edge spacer with the best linear thermal transmittance performance (Psi) on the market.

A MULTITECH G® spacer bar has the following dimensions: height of 6.5 mm, length of 5 metres, and width ranging from 7.5 to 26.5 mm. The thickness of 0.9 mm makes it resistant and particularly rigid.

MULTITECH G® can be bent using automatic bending machines with heating option, welded with special equipment, or simply cut and assembled with traditional corner keys.

- ✓ Fully accredited by IFT Rosenheim and The German BF Institute.
- ✓ Twin perforations for optimum airflow and unit life.
- ✓ The Multitech G® F polymer used ensures clean cuts, burr free and low static for easy desiccant filling.
- ✓ Multitech G® uses a clear gas/MVTR barrier that eliminates a cosmetic problem so all you see is the colour of the secondary sealant/PIB along the shoulder of the spacer bar.
- ✓ Exclusive to DGS Group.



Ordering Information - Multitech G® Spacer Bar

Size	Code	Box Qty 5m Length
8mm	MULTIG/08**	192 Lengths (960m)
10mm	MULTIG/10**	160 Lengths (800m)
12mm	MULTIG/12**	128 Lengths (640m)
14mm	MULTIG/14**	112 Lengths (560m)
16mm	MULTIG/16**	96 Lengths (480m)
18mm	MULTIG/18**	80 Lengths (400m)
20mm	MULTIG/20**	80 Lengths (400m)
22mm	MULTIG/22**	64 Lengths (320m)
24mm	MULTIG/24**	64 Lengths (320m)
27mm	MULTIG/27**	48 Lengths (240m)

Size	Code	Stillage Qty 5m Length
16mm Stillage	MULTIG/16**ST	1344 Lengths (6720m)
20mm Stillage	MULTIG/20**ST	1088 Lengths (5440m)

Other sizes available in stillage quantities

** = Colour choice



Dark Grey RAL 9023 (GY)



Black RAL 9005 (BK)



White RAL 9016 (WH)

Corner Keys

Exclusive range of 90° Corner Keys designed specifically for use with Multitech G® Warm Edge Bar.

Ordering Information - Multitech 90° Corner Keys

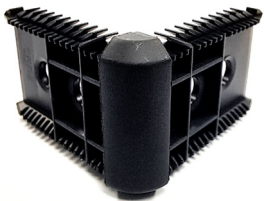
Size	Code	Colour	Box Qty
08mm	MULTI/CK08BK	Black	2000
10mm	MULTI/CK10BK	Black	5000
12mm	MULTI/CK12BK	Black	5000
14mm	MULTI/CK14BK	Black	5000
16mm	MULTI/CK16BK	Black	5000
18mm	MULTI/CK18BK	Black	4000
20mm	MULTI/CK20BK	Black	4000
22mm	MULTI/CK22BK	Black	2000
24mm	MULTI/CK24BK	Black	2000
27mm	MULTI/CK27BK	Black	1300



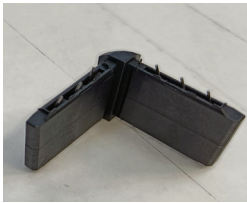
8mm



10, 12, 14, 16, 18 and 20mm



22 and 24mm



27mm

Gas Fill Corner Keys for Multitech G®



Ordering Information - Gas Keys (Codes with hole shown)

Size	Black	Grey	White	Box
10mm	WEGKW10BK	WEGKW10GY	WEGKW10WH	5000
12mm	WEGKW12BK	WEGKW12GY	WEGKW12WH	5000
14mm	WEGKW14BK	WEGKW14GY	WEGKW14WH	5000
16mm	WEGKW16BK	WEGKW16GY	WEGKW16WH	5000
18mm	WEGKW18BK	WEGKW18GY	WEGKW18WH	5000
20mm	WEGKW20BK	WEGKW20GY	WEGKW20WH	5000



*When ordering 'without hole' version, omit W from the code. WEGKW10BK/GY/WH is not available without hole

Ordering Information - Gas Plugs

Black	Grey	White	Box
WEGKPBK	WEGKPGY	WEGKPWH	5000



Gas Sleeves and Plugs for Warm Edge Bar



Suitable for Multitech G

An alternative to gas key fill corner keys (uses 90° corner keys) and also necessary where gas keys are not available in smaller bar sizes.

Ordering Information - 8mm Spacers

Description	Grey	Black	Box
Plug	GKP3.45/7.1	GKP3.45/7.1BK	5000
Sleeve	GKS/7.7	GKS/7.7BK	5000

Plug



Sleeve

Ordering Information - 10mm & Upwards Spacers

Description	Grey	Black	White	Box
Sleeve	GKS/SS	GKS/SSBK	GKS/SSWH	5000
Plug	GKP4.4/7.2	GKP4.4/7.2BK	GKP4.4/7.2WH	5000

Ordering Information - Flexi Keys (Suitable for conservatory roofs)

Size	Black	Grey	White	Box
8mm	WEFK08BK	-	-	4000
10mm	WEFK10BK	-	-	2700
12mm	WEFK12BK	WEFK12GY	WEFK12WH	2000
14mm	WEFK14BK	WEFK14GY	WEFK14WH	1500
16mm	WEFK16BK	WEFK16GY	WEFK16WH	2800
18mm	WEFK18BK	WEFK18GY	WEFK18WH	2500
20mm	WEFK20BK	WEFK20GY	WEFK20WH	2000



Chromatech Ultra F

Optimal thermal performance and exceptional bending capabilities.

CHROMATECH ULTRA F has the resistance of stainless steel together with the low conductivity of plastic. CHROMATECH ULTRA F is a modern spacer profile consisting of APB Polymer and a reinforced, high grade stainless steel structure with dual perforation. This hybrid spacer with one of the best thermal conductivity values in the market has been designed for easy bending.

CHROMATECH ULTRA F spacer measures 6.9 mm high, 5 metres long, and widths from 7.5 to 23.5 mm. The steel thickness of 0.10 mm makes it resistant and flexible. CHROMATECH ULTRA F can be cut to manufacture frames with plastic corners or bent using all bending machines available today on the market.

- ✓ Strong impervious vapour/moisture barrier.
- ✓ Low thermal transmittance (low Psi value).
- ✓ Minimal thermal expansion/contraction ensures long unit durability.
- ✓ Extra small, more frequent perforations ensure good airflow and dust resistance.
- ✓ Extremely suitable for large commercial IG units due to its superior rigidity.



Chromatech Ultra
makes easy corners.



Pre-inserted steel
connectors.

Chromatech Ultra F Warm Edge Bar for Larger Architectural Units



Ordering Information - Chromatech Ultra F Spacer Bar

Size	Code	Box
12mm	SS/BCU12.0**SK	640m
14mm	SS/BCU14.0**SK	560m
16mm	SS/BCU16.0**SK	480m
18mm	SS/BCU18.0**SK	400m
20mm	SS/BCU20.0**SK	400m
22mm	SS/BCU22.0**SK	320m
24mm	SS/BCU24.0**SK	320m



Chromatech Ultra is available in BLACK RAL 9004, GREY RAL 7040, LIGHT GREY RAL 7035 and WHITE.

Ordering Information - Keys

Corner Keys

Size	Code	Box
12mm	SS/BCUCK12.0**	5000
14mm	SS/BCUCK14.0**	5000
16mm	SS/BCUCK16.0**	5000
18mm	SS/BCUCK18.0**	4000
20mm	SS/BCUCK20.0**	4000
22mm	SS/BCUCK22.0**	3500
24mm	SS/BCUCK24.0**	2000

Colours: - ** Black (BK), Dark Grey (DGY), Light Grey (GY) and White (WH)

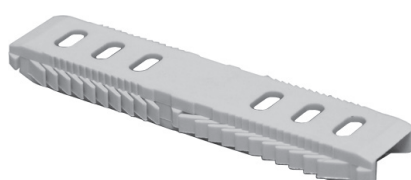
Corner Key



Straight PVC Connectors

Size	Code	Box
12mm	SS/BCUSC12.0	5000
14mm	SS/BCUSC14.0	5000
16mm	SS/BCUSC16.0	5000
18mm	SS/BCUSC18.0	4000
20mm	SS/BCUSC20.0	4000
22mm	SS/BCUSC22.0	3500
24mm	SS/BCUSC24.0	3000

Straight PVC Connector

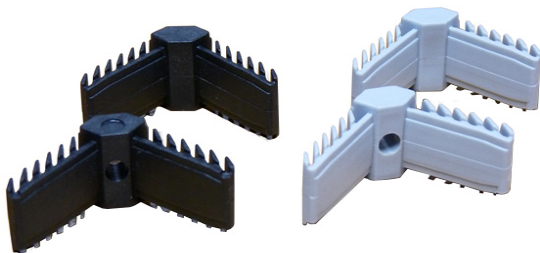


Chromatech Ultra F

Warm Edge Bar Gas Keys



Chromatech Ultra Gas Keys



Black

White

Ordering Information - Gas Keys

Size	Black no hole	Grey no hole	White no hole	Box
12mm	SS/BCUGK12.0BK	SS/BCUGK12.0DGY	SS/BCUGK12.0WH	5000
14mm	SS/BCUGK14.0BK	SS/BCUGK14.0DGY	SS/BCUGK14.0WH	5000
16mm	SS/BCUGK16.0BK	SS/BCUGK16.0DGY	SS/BCUGK16.0WH	4000
18mm	SS/BCUGK18.0BK	SS/BCUGK18.0DGY	SS/BCUGK18.0WH	3500
20mm	SS/BCUGK20.0BK	SS/BCUGK20.0DGY	SS/BCUGK20.0WH	3000

Ordering Information - Gas Fill Plug

Black	Grey	White	Box
GKP5.1BK	GKP5.1	GKP5.1WH	5000

Chromatech Ultra Gas Key Plug 12mm for all sizes



Super Spacer Warm Edge Bar

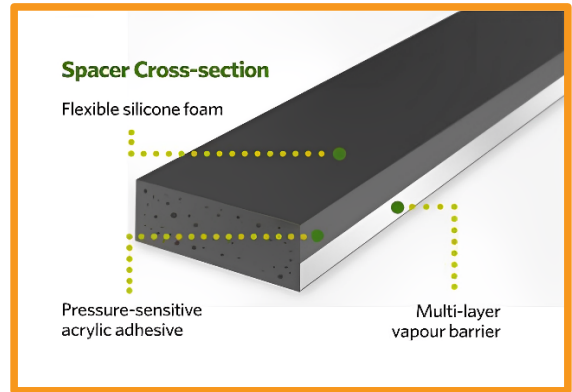


Super Spacer

Super Spacer is a warm edge flexible silicone foam bar with built in desiccant. It provides excellent perimeter insulation for sealed glazing limits.

There is an adhesive layer on each edge of the strip to locate the spacer in the correct position relative to the edge of the glass.

- ✓ Successfully tested from -15° to 125°C.
- ✓ ISO 9001 accredited.
- ✓ Compatible with hot melt butyl sealant.
- ✓ Low thermal conductivity.



Ordering Information - Super Spacer REELS (for enhanced economy)

Code	Size	Length
S/SR06.5*	6.0mm	520m
S/SR08.0*	8.0mm	395m
S/SR09.5*	10.0mm	320m
S/SR12.5*	12.0mm	260m
S/SR14.0*	14.0mm	225m
S/SR16.0*	16.0mm	205m
S/SR17.5*	17.5mm	183m
S/SR20.0*	20.0mm	180m

Colours: - Black (DBK) as standard.
Also available in Light Grey.

Ferrotech Spacer Bar & Keys (Fire Rated)



Ferrotech

One of the strongest spacer bars available on the market.

FERROTECH spacer bar is made of galvanised steel and is characterized by a thermal conductivity lower than that of aluminium.

FERROTECH has a height of 6.5 mm, a length of 6 metres and a width ranging from 5.5 to 23.5 mm. The thickness of 0.38 mm makes it one of the most rigid spacer profile section for double glazing units. FERROTECH can be used in the manufacture of frames with standard corner keys or bent using all bending machines available today on the market. Its particularly resistant structure makes it suitable for the manufacture of exceptionally large windows as well as for the construction of fire-resistant glass units.

Ordering Information - Ferrotech Bar

Code	Size	Box Qty
SS/B05.5	05.5mm	1380
SS/B07.5	07.5mm	1260
SS/B09.5	09.5mm	960
SS/B11.5	11.5mm	768
SS/B13.5	13.5mm	672
SS/B15.5	15.5mm	576
SS/B17.5	17.5mm	480
SS/B19.5	19.5mm	480

Ordering Information - Corner Keys

Code	Size	Box Qty
SS/BCK07.5	07.5mm	5000
SS/BCK09.5	09.5mm	5000
SS/BCK11.5	11.5mm	5000
SS/BCK12.5	12.5mm	5000
SS/BCK14.5	14.5mm	5000
SS/BCK15.5	15.5mm	2500
SS/BCK17.5	17.5mm	2500
SS/BCK19.5	19.5mm	2500

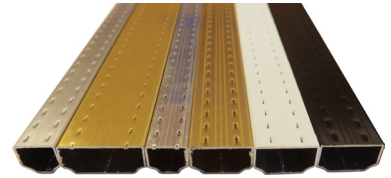


Standard Aluminium Spacer Bar



Aluminium Spacer Bar

- ✓ Standard (for cut and key system) back welded.
- ✓ Aluminium spacer bar suitable for manual application.
- ✓ Manufactured to extremely fine tolerances on high technology equipment.
- ✓ Comes in 4m lengths.
- ✓ Absolutely rigid with non torsional flex.
- ✓ Continuously ventilated with superb breathing characteristics.
- ✓ Simple to drill for Georgian frames.
- ✓ Standard 6.5mm height throughout the entire range.
- ✓ 4mm & 5.5mm suitable for Heritage Windows.



Ordering Information - Standard Spacer Bar

Code	Size (Width)	Box Qty
S/BAP**04.0	4mm	1,800m (Only available in Mill and Dark Bronze)
S/BAP**05.5	5.5mm	2,400m
S/BAP**07.5	7.5mm	1,920m
S/BAP**09.5	9.5mm	1,440m
S/BAP**11.5	11.5mm	1,200m
S/BAP**13.5	13.5mm	1,040m
S/BAP**15.5	15.5mm	880m
S/BAP**17.5	17.5mm	800m
S/BAP**19.5	19.5mm	720m

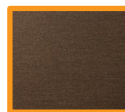
** Available in Mill Finish (LMF), Anodised (LA), Bronze/Brown (BN), Gold (GD) and White (WH)



Mill



Anodised



**Black/
Bronze
RAL 9017**



Gold



White

Standard Aluminium Spacer Bar Keys



Ordering Information - Standard 90° Corner Keys

Code	Size	Bag Size	Box Qty
C/KAP04.0BK	4mm	1000	5000
C/KAP05.5BK	5.5mm	1000	10,000
C/KAP07.5BK	7.5mm	1000	5000
C/KAP09.5BK	9.5mm	1000	5000
C/KAP11.5BK	11.5mm	1000	5000
C/KAP13.5BK	13.5mm	1000	5000
C/KAP15.5BK	15.5mm	1000	5000
C/KAP17.5BK	17.5mm	1000	5000
C/KAP19.5BK	19.5mm	1000	4000



Corner Key

Ordering Information - Flexi Corner Keys

Ideal for conservatory roofs where irregular angles are required.

Code	Size	Box Qty
F/K05.5	5.5mm	1000
F/K07.5	7.5mm	1000
F/K09.5	9.5mm	1000
F/K11.5	11.5mm	1000
F/K13.5	13.5mm	1000
F/K15.5	15.5mm	1000
F/K17.5	17.5mm	1000
F/K19.5	19.5mm	1000



Flexi Key

Standard Aluminium Spacer Bar Gas Keys



Ordering Information - Gas Corner Keys (with hole or without hole)

Gas Keys			
Size (mm)	With hole	No hole	Bag Qty
05.5	GKW05.5**	GK05.5**	2000
07.5	GKW07.5**	GK07.5**	2000
09.5	GKW09.5**	GK09.5**	2000
11.5	GKW11.5**	GK11.5**	2000
13.5	GKW13.5**	GK13.5**	2000
15.5	GKW15.5**	GK15.5**	2000
17.5	GKW17.5**	GK17.5**	2000
19.5	GKW19.5**	GK19.5**	2000
23.5	GKW23.5**	GK23.5**	2000

Plugs		
Use plug	Plug	Bag Qty
3.6mm	GKP3.6**	1000
5.1mm	GKP5.1**	1000
5.1mm	GKP5.1**	1000
5.1mm	GKP5.1**	1000
5.1mm	GKP5.1**	1000
5.1mm	GKP5.1**	1000
5.1mm	GKP5.1**	1000
5.1mm	GKP5.1**	1000
5.1mm	GKP5.1**	1000

Available in Grey or Black (BK)



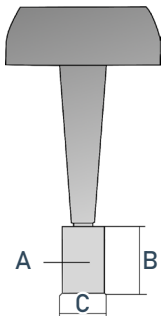
Standard Aluminium Spacer Bar Gas Plugs and Sleeves



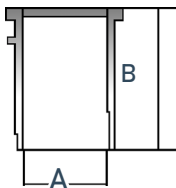
Ordering Information - Gas Sleeves and Plug

Sleeve Details			Plug Details	
Dia of Drill Hole	Sleeve Grey	Box Qty	Plug Grey	Box Qty
6.5mm	GKS/6.8	1000	GKP5.1	1000
5.0mm	GKS	1000	GKP4.4/7.2	1000

Available in black (BK) e.g. GKS/6.8BK



Sleeve Dimensions			Plug Dimensions		
Dia of Drill Hole	Dim A	Dim B	Dim A	Dim B	Dim C
6.5mm	6.7mm	8.0mm	5.8mm	7.25mm	5.3mm
5.0mm	5.1mm	7.7mm	4.45mm	7.1mm	4.3mm



Bendable Aluminium Spacer Bar



Bendable Spacer Bar with Connector Inserted

A bendable spacer bar back welded and manufactured to have the mechanical characteristics required for automated manufacture. A special alloy and temper ensure that the corners are smooth and well formed. This bendable bar comes with pre-inserted steel connectors and is in 5m lengths.



Ordering Information - Bendable Spacer Bar

Code	Size (mm)	Box Qty
B/BAP**05.5WK	05.5	3000m
B/BAP**07.5WK	07.5	2400m
B/BAP**09.5WK	09.5	1800m
B/BAP**11.5WK	11.5	1500m
B/BAP**13.5WK	13.5	1300m
B/BAP**15.5WK	15.5	1100m
B/BAP**17.5WK	17.5	1000m
B/BAP**19.5WK	19.5	900m



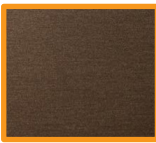
** Available in Colours Below



Mill
(LMF)



Anodised
(LA)



Black/
Bronze
(RAL9017)
(BN)



Gold
(GD)



White
(WH)

Bendable Aluminium Spacer Bar Connectors



Ordering Information - Straight Steel Connectors

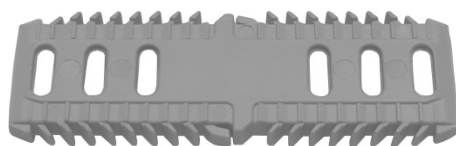
Code	Size	Box Qty
B/BSC05.5	5.5mm	2500
B/BSC07.5	7.5mm	2500
B/BSC09.5	9.5mm	2500
B/BSC11.5	11.5mm	2500
B/BSC13.5	13.5mm	2500
B/BSC15.5	15.5mm	2000
B/BSC17.5	17.5mm	1500
B/BSC19.5	19.5mm	1500



Straight Steel Connector for
Bendable Spacer Bar.

Ordering Information - Straight Plastic Connectors

Code	Size	Box Qty
B/BAPC11.5	11.5mm	5000
B/BAPC13.5	13.5mm	5000
B/BAPC15.5	15.5mm	4000
B/BAPC17.5	17.5mm	4000
B/BAPC19.5	19.5mm	4000



Straight Plastic Connector for
Bendable Spacer Bar. Used for
connecting bar lengths when
feeding through bending machines.

Warm Edge Duplex Keys (Back-to-Back 2 Piece System)



Duplex Centre and Edge Keys

Duplex Grille System enables fabricators to simulate traditional multi-pane Georgian windows utilising standard Warm Edge Spacer profile and bespoke centre/edge keys.

Optimum Sizing

In order to ensure optimum grille rigidity the maximum recommended length of integra bar (irrespective of spacer bar size) between the centre key centres is 500mm.



14mm Centre Key



18mm Centre Key

Ordering Information - Centre Keys

Code	Width	Depth	Box Qty	Round Buffer 16mm	Round Buffer 20mm
WEDC11.5X14**	11.5mm	14mm	200	✓	✗
WEDC15.5X14**	15.5mm	14mm	200	✗	✓
WEDC11.5X18**	11.5mm	18mm	200	✓	✗
WEDC15.5X18**	15.5mm	18mm	200	✗	✓

Warm Edge Duplex Keys System



14mm Version



18mm Version

Ordering Information - Edge Keys

Code	Key Size	Box Qty
WEDE11.5X14**	11.5mm x 14mm	400
WEDE15.5X14**	15.5mm x 14mm	400
WEDE11.5X18**	11.5mm x 18mm	400
WEDE15.5X18**	15.5mm x 18mm	400



Duplex Key System for Standard Spacer



Duplex Key System (back to back 2 Piece System)

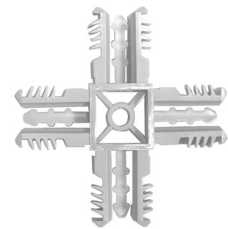
The duplex key system uses standard spacer bar to create the illusion of individual double glazed units where the manufacturer wants to add a profile to the outside of the glass to create a traditional Georgian effect window.



Bar and Key

Ordering Information - Duplex Centre Keys

Size	Centre Key 18mm	Box Qty	Centre Key 24mm	Box Qty
7.5mm	S/BCK07.5/18	600	S/BCK07.5/24	600
9.5mm	DUC/K09.5X18	200	S/BCK09.5/24	350
11.5mm	DUC/K11.5X18	200	S/BCK11.5/24	300
15.5mm	DUC/K15.5X18	200	S/BCK15.5/24	230
17.5mm	S/BCK17.5/18	250	S/BCK17.5/24	200
19.5mm	S/BCK19.5/18	220	S/BCK19.5/24	170



**9.5, 11.5 and 15.5mm
Centre Key**



**7.5, 17.5 and 19.5mm
Centre Key**

Ordering Information - Duplex Edge & End Keys

Size	18mm	Box Qty	24mm	Box Qty
7.5mm	S/BEK07.5/18	3700	S/BEK07.5/24	3700
9.5mm	DUE/K09.5X18	400	S/BEK09.5/24	2500
11.5mm	DUE/K11.5X18	400	S/BEK11.5/24	2000
15.5mm	DUE/K15.5X18	400	S/BEK15.5/24	1500
17.5mm	S/BEK17.5/18	1500	S/BEK17.5/24	1300
19.5mm	S/BEK19.5/18	1300	S/BEK19.5/24	1200



**9.5, 11.5 and 15.5mm
End Key**



**7.5, 17.5 and
19.5mm Edge Key**

(DUE Codes are end keys)

See page 17 for details of bar to use with this key system.

Hotmelt & 2 Part Sealant

Hotver A+ Hotmelt

2 Part Sealant

Primary Sealant (PIB)



Products
on the website:



HOTVER A+

HOT MELT INSULATING GLASS SEALANT

Hotver A+ hotmelt sealant for insulating glass, is the most advanced product in its class in respect of key measures to ensure unit longevity and is unrivaled in respect of MVTR (moisture vapor transmission rate) and gas retention properties.

Adhesion to glass is also one of the most important aspects of edge sealant and the results which have been achieved with a minimal seal depth, both dual and single seal, are simply the best. Hotver A+ can be processed with all types of manual and robotic equipment.

Features:

- ✓ Fast free flowing.
- ✓ Fully certified and compliant to EN1279 Part 2*, Part 3* and Part 4
- ✓ Hotver A+ can be substituted for any other hotmelt sealant without further testing. *With single and dual seal configuration.
- ✓ Anti-slumping.
- ✓ Anti-stringing.
- ✓ Best in class performance with lowest production cost opportunity of any hotmelt available.



Ordering Information - Hotver A+

Code	Description	Pallet Qty
H/MHOTVERA+/6	Hotver A+ Hotmelt 6kg	108 Boxes
H/MFENZIA+/200	Hotver A+ Hotmelt 200kg drum	2 Drums

Fenzi Thiover® 'Two-component polysulphide sealant for insulating glass'

Thiover is a polysulphide sealant especially formulated for insulating glass. Thiover is totally solvent free and can be used either for the production of single seal or dual seal panels.

Features:

- ✓ Excellent performance in terms of thermal insulation.
- ✓ Completely solvent free.
- ✓ Extremely low permeability to water vapour and gas.
- ✓ Conforms to the most advanced criteria for eco compatibility.



Ordering Information - Thiover

Code	Description	Set Size
P/SFENZI/210	Thiover® 2 Part Polysulphide Sealant	210 litre*

*Base 191 Litres & Accelerator 19 Litres

Emcepren 200 LD Polyurethane Insulated Glass Sealant

Features:

- ✓ Solvent free two-component polyurethane sealant for edge sealing of all types of insulated glass units.
- ✓ Gives primerless adhesion to glass and spacer bars.
- ✓ Its rheological properties ensure trouble-free application with both automatic and manual application systems.



Ordering Information - Emcepren

Code	Description	Set Size
P/UEMCEPREN/22	Emcepren 200 LD 22 Litre	22 litre*

*20 Litre Drum & 2 Litre Hardener

Butylver® Primary Sealant

Fenzi Butylver®, is a one part polyisobutylene PIB based material, totally solvent free especially formulated for use as the primary seal in double glazed sealed units. Fenzi Butylver® PIB allows for minimum water vapour and gas permeation. Butylver® has excellent adhesion properties to glass and metal spacer systems and can be used together with Fenzi Thiover® Polysulphide and other conventional secondary sealants.



Features:

- ☑ Application temperature between 130° C and 150° C.
- ☑ Moisture vapour transmission maximum 0.03 (g/m² - 24hr-2mm), in accordance to EN 1279/4.


Ordering Information - PIB

Code	Description	Box Qty
PIBFENZI/28	7kg Slug	4 x 7kg
PIBFENZI/1	1kg Slug	1 x 1kg

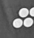
Desiccant

Glasmol Desiccant



GLASMOL
MOLECULAR SIEVE 

BEAD SIZE: 0,5 - 0,9 mm
PART CODE: DESGM150
NET WEIGHT: 150 kg
BATCH NUMBER: 2300021112

GLASMOL
MOLECULAR SIEVE 

BEAD SIZE: 0,5 - 0,9 mm
PART CODE: DESGM150
NET WEIGHT: 150 kg
BATCH NUMBER: 2300021112

**Products
on the website:**



Glasmol Desiccant

DGS 3A Molecular Sieve has been specifically developed for use in insulating glass production. The product is suitable for all gas filling types and solvent free sealant systems. Low dew points are achieved over a long period of time to minimise pane deflection and glass breakage.

- ✓ Certified to BS EN1279-4:2018.
- ✓ Density g/l x moisture capacity (AWAC) % WT = Available H₂O capacity.
- ✓ The higher H₂O capacity the longer your units last in field less warranty claims.
- ✓ Low adsorption speed gives more open time prior to sealing up if wanted.
- ✓ Low gas desorption as standard – less stress on edge seal longer unit life
- ✓ Low dust attrition no Health & Safety issues.
- ✓ Low static levels gives hassle free productivity and no blocked automatic fillers.



Description		DESGM25	DESGM150	DESGMMB25
Bead Size	mm	1.0 – 1.5mm (standard)	0.5 – 0.9 mm (mini)	0.5 – 0.9 mm (mini)
Packed		25 kg Cartons	150 kg Steel Drums	25 kg Cartons
Bulk Density	g/l	≥ 810	≥ 810	≥ 810
AWAC	% WT	≥ 16	≥ 16	≥ 16
LOI	% WT	≤ 1.7	≤ 1.7	≤ 1.7
Gas Desorption	ml/g	≤ 0.3	≤ 0.3	≤ 0.3
Granular Distribution	%	>98	>98	>98
Delta T 50ml H2O 50 gms Sieve	C	~>30C	~>30C	~>30C

Glasmol Standard & Mini Bead Desiccant



Notes on Testing



Production of DGS 3A Molecular Sieve is continuously monitored to ensure compliance with the stated specification. Batch samples and test results are stored for a minimum of two years after production.

Mini Bead Desiccant

Is designed for warm edge bars. As the walls of the bar are thicker this reduces the internal space and means less desiccant will fit in. By using mini bead you are adding more desiccant and therefore prolonging the life of the sealed unit.

Desiccant Testing Kit

A quality testing kit which includes beakers, funnel and thermometer. Suitable for testing Glasmol Standard Desiccant.



Ordering Information - Testing Kit

Code	Box Qty
DESGM-TESTKIT	1

For details of the test procedure please see our website.

Warehousing

In total we have 120,000 sq ft. in Castle Donington and across the country.

Millions of metres of warm edge spacer bar held in stock, thousands of door and window locks and much, much more. DGS has the capacity to supply and deliver on time every time. Customer service and satisfaction is paramount to any company and at DGS our success is based on having the right product ranges available ex stock for your business.



DGS Group Plc.

National Company. Local Service.

Decorative Products

Aluminum Georgian Bar Painted Finishes

Aluminum Georgian Bar Foiled Finishes

Aluminum Georgian Bar Tu-Tone

Georgian Bar Keys

Germanella P Georgian Bar

Lead & Accessories

**Products
on the website:**

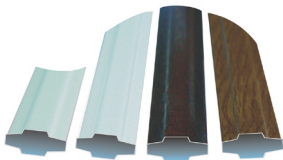


Aluminium Georgian Bar (Painted Finishes)







Aluminium Georgian Bar (Painted Finishes)

Aluminium Electro-Welded Georgian bar in 3m lengths, in both 18x8 and 25x8 sizes and available in a range of painted finishes. The georgian bar can be square cut and used with colour matched centre keys for fast assembly.



Ordering Information - Aluminium Georgian Bar

Colour	Code 18 x 8	Box	Code 25 x 8	Box	Sample
White RAL 9016	G/BAP1808WH	285m	G/B2508WH	192m	
Warm White RAL 9010	G/BAP1808WW	285m	G/B2508WW	192m	
Brown RAL 8014	G/BAP1808BN	285m	G/B2508BN*	192m	
Ivory RAL 1015	G/BAP1808IV	285m	G/B2508IV*	192m	

Stillages are available on request.

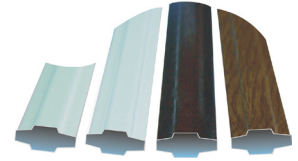
*Minimum order quantities may apply.

Aluminium Georgian Bar (Foiled Finishes)





Aluminium Georgian Bar (Foiled Finishes)

Aluminium Electro-Welded Georgian bar in 3m lengths, in both 18x8 and 25x8 sizes and available in a range of foiled finishes. The georgian bar can be square cut and used with colour matched centre keys for fast assembly.



Ordering Information - Aluminium Georgian Bar

Colour	Code 18 x 8	Box	Code 25 x 8	Box	Sample
Mahogany Woodgrain	G/BF1808MY	285m	G/BF2508MY*	192m	
Light Oak Woodgrain	G/BF1808LO	285m	G/BF2508LO*	192m	
Rosewood Woodgrain	G/BF1808RW	285m	G/BF2508RW	192m	
Irish Oak Woodgrain	G/BF1808IO	285m	G/BF2508IO*	192m	
Chartwell Green Woodgrain	G/BF1808CG*	285m	G/BF2508CG*	192m	
Anthracite Grey Woodgrain	G/BF1808AG	285m	G/BF2508AG*	192m	
Cream White Woodgrain	G/BF1808CRF	285m	G/BF2508CRF*	192m	
Black Woodgrain	G/BF1808BKG	285m	G/BF2508BKG*	192m	

Stillages are available on request.

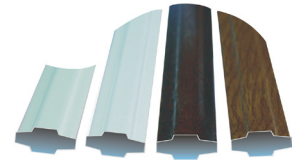
*Minimum order quantities may apply.

Aluminium Tu-Tone Georgian Bar

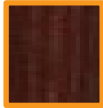









Aluminium Georgian Bar (Tu-Tone)

Aluminium Electro-Welded Georgian bar in 3m lengths, in both 18x8 and 25x8 sizes and available in a range of Tu-Tone finishes (white inside with colour on outside). The georgian bar can be square cut and used with colour matched centre keys for fast assembly. White half is RAL 9016.



Ordering Information - Aluminium Georgian Bar Tu-Tone

Colour	Code 18 x 8	Box	Code 25 x 8	Box	Sample
Mahogany/ White	G/BF1808MY/WH	285m	G/BF2508MY/WH*	192m	
Light Oak/ White	G/BF1808LO/WH	285m	G/BF2508LO/WH*	192m	
Rosewood/ White	G/BF1808RW/WH	285m	G/BF2508RW/WH*	192m	
Irish Oak/ White	G/BF1808IO/WH	285m	G/BF2508IO/WH*	192m	
Chartwell Green/White	G/BF1808CG/WH	285m	G/BF2508CG/WH*	192m	
Anthracite Grey/White	G/BF1808AG/WH	285m	G/BF2508AG/WH*	192m	
Cream White/White	G/BF1808CRF/WH	285m	G/BF2508CRF/WH*	192m	
Black/White	G/BF1808BK/WH	285m	G/BF2508BK/WH*	192m	

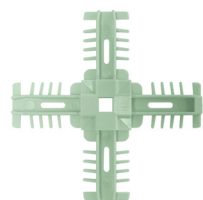
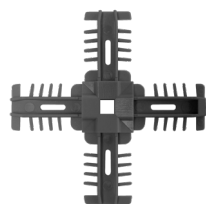
*Minimum order quantities may apply.

Georgian Bar Drilled Centres Square Hole



Ordering Information - Drilled Centres (Requires Rubber Inserts)

Painted Bar Foiled/Woodgrain Bar	Code	Colour	Box Qty
	G/BDCS1808WH	White (RAL 9016)	800
	G/BDCS1808WW	Warm White (RAL 9010)	800
	G/BDCS1808BN	Brown (RAL 8014)	800
	G/BDCS1808MY	Mahogany Woodgrain	800
	G/BDCS1808LO	Light Oak Woodgrain	800
	G/BDCS1808AG	Anthracite Grey Woodgrain	800
	G/BDCS1808CG	Chartwell Green Woodgrain	800
	G/BDCS1808IO	Irish Oak Woodgrain	800
	G/BDCS1808CR	Cream White Woodgrain	800
	G/BDCS1808BKG	Black Woodgrain	800



Square Drilled Centres

Ordering Information - Rubber Inserts (11.5mm)*

Painted Bar Foiled/Woodgrain Bar	Code	Colour	Box Qty
	G/BRISWH	White (RAL 9016)	800
	G/BRISWW	Warm White (RAL 9010)	800
	G/BRISBN	Brown	800
	G/BRISLO	Light Oak	800
	G/BRISMY	Mahogany	800
	G/BRISAG	Anthracite Grey	800
	G/BRISCG	Chartwell Green	800
	G/BRISCR	Cream White	800
	G/BRISIO	Irish Oak	800
	G/BRISBKG	Black Grain	800



Rubber Inserts

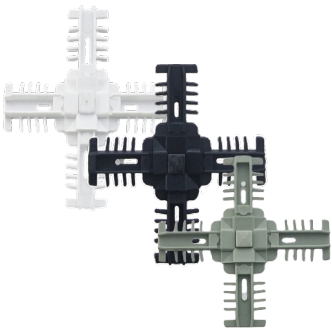
*Also available in 15.5mm and 19.5mm, for larger cavities.

Georgian Bar Centre Keys Fully Assembled



Georgian Bar Centre Keys

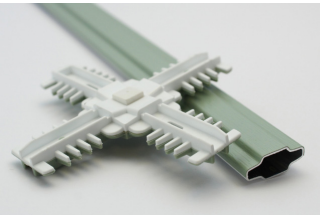
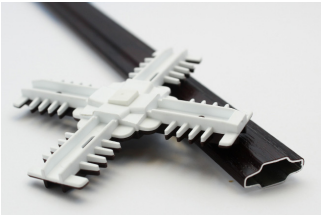
Fully assembled with square buffer, these keys are a superb colour match for our range of tu-tone foiled georgian bar.



Ordering Information

Fully Assembled Tu-Tone Centre Keys

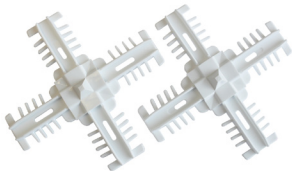
Code	Colour	Box Qty
G/BDCSA1808AGWH	Anthracite Grey/White	250
G/BDCSA1808CGWH	Chartwell Green/White	250
G/BDCSA1808BKWH	Black/White	250
G/BDCSA1808CRWH	Cream/White	250
G/BDCSA1808IOWH	Irish Oak/White	250
G/BDCSA1808LOWH	Light Oak/White	250
G/BDCSA1808MYWH	Mahogany/White	250



Ordering Information

Fully Assembled Drilled Centres with Buffers Pre-Inserted

Code	Description	Box Qty
G/BDCSA1808WH	SQUARE White (RAL 9016) 11.5mm Buffer	800
G/BDCSA1808WW	SQUARE Warm White (RAL9010) 11.5mm Buffer	800
G/BDCSA1808WH15	SQUARE White (RAL9016) 15.5mm Buffer	800



Georgian Bar Drilled Centres Round Hole



Ordering Information Drilled Centres (Requires rubber inserts)

Code	Colour	Box Qty
G/BDC1808WH	White (RAL 9016)	200
G/BDC1808WW	Warm White (RAL 9010)	200



Round Drilled Centres

Ordering Information Rubber Inserts (11.5mm)

Code	Colour	Box Qty
G/BRIWH	White (RAL 9016)	200
G/BRIWW	Warm White (RAL 9010)	200



Round Drilled Centre Buffers

Also available in 15.5mm and 19.5mm length for larger cavities.

Ordering Information Fully Assembled Drilled Centres with Buffers Pre-Inserted

Code	Description	Box Qty
G/BDCA1808WH	ROUND Hole White (RAL 9016)	150
G/BDCA1808WW	ROUND Hole Warm White (RAL9010)	150



Ordering Information Square Cut Centres for Painted Finishes

Code	Colour	Box Qty
G/BSC**08WH	White (RAL 9016)	200
G/BSC**08WW	Warm White (RAL 9010)	200
G/BSC**08BN	Brown (RAL 8014)	200
G/BSC**08IV	Ivory (RAL 1015)	800

** Available in 18mm (18), or 25mm (25)

Colour Range:



18 x 8



25 x 8



Ordering Information - Georgian Bar Ends

Code	Description	Box Qty
G/BE**08WH	White (RAL 9016)	500
G/BE**08WW	Warm White (RAL 9010)	400
G/BE**08BN	Brown (RAL 8014)	400
G/BE**08LO	Light Oak	400

** Also available in 25mm (25)



Georgian Bar End

Ordering Information - Georgian Bar Staple Ends

Code	Description	Box Qty
G/BSEDGS1808CL	Staple Ends 18x8 Clear	1000
G/BSEDGS2508CL	Staple Ends 25x8 Clear	1000



Staple End

Ordering Information - Georgian Bar Self Centering Staple Ends

These ends are for attaching georgian bar to spacer bar using a staple/pin. The fins on the end are designed to lift the georgian bar up to the centre of the spacer bar for fixing.

Code	Description	Box Qty
G/BSEC**/11.5	Staple End 11.5mm Fins	1000
G/BSEC**/15.5	Staple End 15.5mm Fins	1000
G/BSEC**/19.5	Staple End 19.5mm Fins	1000

** Also available in 25mm (25)



Self Centering
Staple End

Ordering Information - Georgian Bar Saddle Clips

Saddle clips connect straight cut geo bar to geo bar bends, also used as an alternative to georgian bar centres as a way of eliminating 'wobble' on larger georgian grilles.

Code	Description	Box Qty
G/BSAD1808WH	Saddle Clip 18 x 8 White	100
G/BSAD1808BN	Saddle Clip 18 x 8 Brown	100
G/BSAD2508WH	Saddle Clip 25 x 8 White	100



Saddle Clip

Germanella P Georgian Bar














DGS Germanella P Georgian bar is an aesthetically pleasing light section bar. Its cross section is 9 x 5.5mm. It is available in gold and chrome finishes and comes in 3m lengths.

Ordering Information - Germanella P Georgian Bar

Code	Description	(M) Per Box
G/BGP/GD	Germanella P Georgian Bar Gold	240
G/BGP/CH	Germanella P Georgian Bar Chrome	240

Ordering Information - Germanella P Accessories

Code	Description	Box Qty	Image
G/BGPPI/GD	Plastic Insert Piece (Gold)	300	
G/BGPMC/GD	Metal Cross Cover (Gold)	300	
G/BGPPI/CH	Plastic Insert Piece (Chrome)	300	
G/BGPMC/CH	Metal Cross Cover (Chrome)	300	
G/BGPPC/GD	Plastic Shiny Centre Piece (Gold)	300	
G/BGPPC/CH	Plastic Shiny Centre Piece (Chrome)	300	
G/BGPME/GD	Metal End (Gold)	200	
G/BGPME/CH	Metal End (Chrome)	200	
G/BGPPES/CL	Plastic End Connector (Short Pip)	800	
G/BGPPEL/CL	Plastic End Connector (Long Pip)	800	
G/BGPPSE/CL	Plastic Staple End	800	

Lead & Accessories

High quality lead strip utilising only premium quality acrylic adhesive. All in 50m Reels.

Ordering Information - Natural Lead

Code	Size	Box Qty
LED1250	12mm	4
LED0950	9.0mm	5
LED0650	6.0mm	6
LED04.550	4.5mm	7

Ordering Information - Antique Lead

Code	Size	Box Qty
LEDA1250	12mm	4
LEDA0950	9.0mm	5
LEDA0650	6.0mm	6
LEDA04.550	4.5mm	7

Ordering Information - Accessories

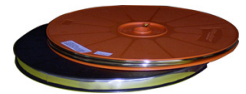
Code	Description	Bottle Size
LED/AR500	Lead Adhesive Remover	500ml

Ordering Information - Boning Peg

Code	Description	Box Qty
B/P	Boning Peg	1

Ordering Information - Rubber Lead Roller

Code	Description	Box Qty
RLR	Rubber Lead Roller	1



50m Reels



Natural Lead



Antique Lead



Lead Adhesive Remover



Boning Peg



Rubber Lead Roller

Tapes

Sealed Unit Edge Tapes

Spacer Bar Tape

Products
on the website:



Cloth Tape

Our cloth tape is a PE laminated synthetic cloth duct tape, coated with synthetic rubber - resin solvent free adhesive. Characterized by excellent conformability, adhesion to multiple surfaces and high tensile strength, it is suitable for double glazing unit sealing.

- ✓ Good holding power.
- ✓ Easy tear.
- ✓ Good tensile strength.
- ✓ Excellent conformability.
- ✓ Suitable for multiple surfaces.
- ✓ Perfectly waterproof.
- ✓ Abrasion resistant.



Ordering Information - Cloth Tape

Code	Description	Box Qty
CT25	Laminated Cloth Tape 25mm	48
CT38	Laminated Cloth Tape 38mm	32
CT44	Laminated Cloth Tape 44mm	28
CT50	Laminated Cloth Tape 50mm	24

Protection Tape

DGS Protection Tape is a low tack black tape, which can be readily removed after use without leaving any residue. Comes on a 50m reel.



Ordering Information - Protection Tape

Code	Description	Box Qty
P/T02	Protection Tape 2" (50mm)	24

Primary Seal PIB Tape

For use when fabricating sealed units to EN1279 Part 3 - Gas Retention

PIB is an effective barrier against gas loss for both hot melt and 2 part edge sealants. Application can be by hand or using a simple tape applicator.



Technical Data

- ✓ Size: 0.6mm x 4mm x 30m.
- ✓ Packing: 140 rolls per box.
- ✓ Specific gravity: 1.35.
- ✓ Tested to EN1279 UV/Fogging Norm.

Ordering Information - PIB Tape

Code	Description	Reel/Carton
PIB/TAPE3.5	PIB tape 4mm 30m roll	140

Double Sided Spacer Bar Tape

Spacer Bar tape is a high quality product applied to the side of the spacer bar, which has been tested to BS5713 resistance to ultra-violet radiation when in use with double glazed sealed units.



Ordering Information - Spacer Bar Tape

Code	Description	Reel/Carton
DST3.5	Spacer Bar Tape 3.5mm	160

80,000,000+

We have our very own ISO9001 Accredited UK manufacturing plant in Melbourne Derbyshire producing over 80 million (pairs to date) of Window Friction stays and accessories.



DGS Group Plc.

National Company. Local Service.

Cleaning Products - Nozzles - Pads

Glass Cleaning Products

Cleaning Products

Nozzles

Pads



Products
on the website:



Glass Washer Resin

This resin combines high capacity with excellent chemical & physical properties. Designed for use in the final polishing process, where pure water is required.



Ordering Information - Glass Washer Resin

Code	Description	Unit
GWRNM60	Glass Washer Resin	25 litres

Glass Cleaner

Glass Cleaner is an alcohol based cleaner designed for cleaning different types of glass and mirrors. The fast acting, drying and non-smear formula cleans any glass or mirrored surface with a spotless finish.

Ordering Information - Cleaners

Code	Description	Unit
PVC/SPRAY750	PVCU Aerosol Spray Cleaner	750 ml
G/CFOAM750	Glass Mirror Foam Aerosol	750 ml
G/C1	Glass Cleaner	1 litre
G/C25	Glass Cleaner	25 litre



Cleaning Paper

2 ply white cleaning paper rolls with tear off sheet style for all general cleaning applications.



Ordering Information - Cleaning Paper

Code	Description	Unit	Dimensions	Box Qty
C/P2PLYBN	2 Ply White	Roll	260mm Wide x 400m Long	2
C/PS2PLYWH	Small White	Roll	190mm Wide x 150m Long	6

Multi-Purpose Wipes

- ✓ Extra large cleaning wipes.
- ✓ Can be used to clean hands, tools and surfaces.
- ✓ Works with silicone, MS polymer, PU Foam and adhesives.
- ✓ Quick, easy and safe to use.
- ✓ More effective than soap and water.



Ordering Information - Swipex Wipes

Code	Description	Unit	Box Qty
SWIPEX/WIPES	Swipex Wipes	80 Wipes/Carton	6 Cartons

Steel Wool

For general purpose cleaning, surface preparation and the removal of paint, varnish and rust. Suitable for use with a chemical stripper.



Ordering Information - Steel Wool

Code	Description	Box Qty
S/W500	Metallic Steel Wool 000 Grade	1

Brass Nozzle Guides

High quality brass nozzle guides for use with sealant application machines such as hotmelt machines. They come in a range of sizes from 6mm - 20mm.



Ordering Information - Brass Nozzle Guides

Code	Description	Box Qty
N/G**BS	Nozzle Guide	1

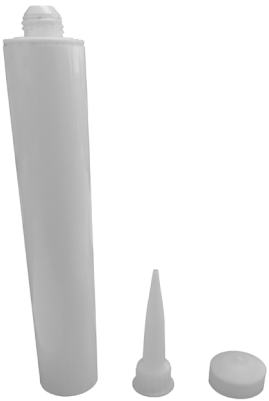
Replace ** with 06, 08, 10, 12, 14, 16, 18 or 20.
E.g. N/G08BS

Cartridges, Plungers and Nozzles

Empty Cartridges are used for applying 2-part sealants.

Ordering Information - Cartridges & Nozzles

Code	Description	Box Qty
E/C	Empty Cartridges	140
E/CN	Empty Cartridge Nozzle	140
E/CP	Empty Cartridge Plunger	140



Silicone Pads

Silicone pads are used to smooth off hotmelt around the edge of the sealed unit.

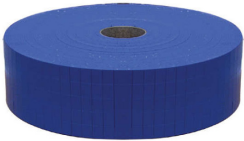


Ordering Information - Silicone Pads

Code	Description	Unit	Pads per Bag
S/P100x64	100 x 64mm	Bag	5

Foam Protection Pads

Foam protection pads are used to separate and protect sealed units during transportation and storage.



Ordering Information - Foam Protection Pads

Code	Description	Box Qty
P/P42118	4.3 x 18 x 24mm High Density (Blue)	10000 (jumbo roll)

Cork Protection Pads

Cork protection pads are used to separate and protect sealed units during transportation and storage.



Ordering Information - Cork Protection Pads

Code	Description	Box Qty
C/PADWH	19 x 19 x 4.5mm White	1000

10 years

The average length of service across
all of our 200 valued members of
staff across our UK and Ireland
branches.



DGS Group Plc.

National Company. Local Service.

Glass Tools

Pin Gun, Pins and Staples

Pad Lifters and Glass Cutter

T Square and Suction Lathe

Stanley Scraper, Knife and Blades

Measuring and Cutting

Glas O Meter

Products
on the website:



Aluminium Georgian Bar Pins and Staples



DGS Pin Gun

Pin Gun - facilitates fast, cost effective permanent fixing of Georgian Grilles/Duplex frames etc in ALL Spacer frame types including Warm Edge. This innovative system replaces traditional staple fixing systems with a simple steel pin that eliminates potential cracking of warm edge spacer bar.



Features:

- ✓ Potential cracking of spacer bar is eliminated.
- ✓ Suitable for aluminium, stainless steel and warm edge spacer bars.
- ✓ Operation is fast and simple.
- ✓ Required air pressure for operation 4 - 6 bar.
- ✓ Potential cost savings of up to 30%.
- ✓ Grilles are desiccated after fabrication giving total manufacturing flexibility.

Ordering Information - Pin Gun & Pins

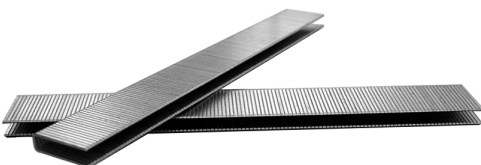
Code	Description	Box Qty
G/BPINGUN	DGS Pin Gun	1
G/BPINS	DGS Pins to Suit	20,000



Ordering Information - Staples

Traditional Staples for use with Staple Machine.

Code	Description	Box Qty
G/BSTAPLE/BEA16	Staples Standard Box	5000



Pad Lifters

Ideal for carrying heavy, awkward items. Effective with glass, doors, windows & sheet metal. Securely grips on glass and similar non-porous surfaces. Available in Double and Triple versions for greater carrying capacity.

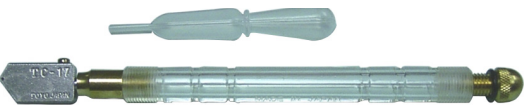


Ordering Information - Pad Lifters

Code	Description	Carrying Capacity
DPL	Double Pad lifter	60kg
TPL	Triple Pad lifter	100kg

Ordering Information - Glass Cutters

Code	Description
G/CTC17	Toyo Glass Cutter TC17 Plastic Handle
G/CTC17A	Toyo Glass Cutter TC17a Metal Handle
G/CTC20	Toyo Glass Cutter TC20



Toyo Self Oiling Glass Cutter TC17



Toyo Glass Cutter with Metal Handle TC17a



Toyo Glass Cutter with Plastic Handle TC20

'T' Squares

Sturdy, durable and accurate. Made to exacting specifications to ensure the right angle, time after time.



Ordering Information - 'T' Squares

Code	Description	Box Qty
T/SS1250	T Square Super 1250mm	1
T/SS1350	T Square Super 1350mm	1
T/SS1550	T Square Super 1550mm	1

Suction Lathe

Safe and accurate straight line cutting edge for one person operation. Quick suction action with easy turn screw.



Ordering Information - Suction Lathe

Code	Description	Box Qty
S/L2500	Suction Lathe 2500mm	1

Stanley Scraper, Knife & Blades

Ideal for removing excess paint/stickers from windows.

Ordering Information - Stanley Scraper

Code	Description	Box Qty
S/S	Stanley Scraper	1
S/BHD1992	Heavy Duty Stanley Blades	100



Retractable Knife

Multi purpose knife with retractable blade and spare blades.

Ordering Information - Knife

Code	Description	Box Qty
S/K	Knife	1
S/BHD1992	Heavy Duty Stanley Blades	100



Multi Purpose Razor Blades

Compatible with other makes of scraper. Multipurpose for a variety of uses.

Ordering Information - Razor Blades

Description	Code	Unit
Razor Blades Single Edged	R/BSE	Box 100



Moon Knife

For cleaning/trimming PVCu frame corners.

Ordering Information

Code	Description	Unit
M/KC	PVCu Window Knife (Crescent)	Each
M/KT	PVCu Window Knife (Trade)	Each



Gasket Shears

Gasket shears with cushion grip handles for extra comfort and safety. Multi angled base capable of 45-90 degree angles.

Ordering Information

Code	Description	Unit
G/SHEARS	Gasket Shears	Each



Heavy Duty 5m Tape Measure

- ✓ High quality, shockproof rubber casing.
- ✓ Clear and easy to read graduations in metric and imperial units.
- ✓ Available in 5m x 25mm.



Ordering Information

Code	Description	Unit
T/M05	Heavy Duty Tape Measure (5m)	Each

Glass Measuring Tool

The Glass Gauge provides a simple, convenient solution, making it quick and easy to accurately measure glass while leaving the sealed unit completely intact.

- ✓ Robust steel frame and ruler.
- ✓ Jaws open to 104mm making it easy to measure around even the widest frame
- ✓ Ruler on both sides for measuring convenience.
- ✓ Complete with hard, moulded protective carry case.



Ordering Information - Glass Measuring Tool

Code	Description	Box Qty
G/M0471	Glas O Meter	1

National Company Local Service

Established in 1977, DGS Group Plc is a privately owned manufacturer and distributor. Our network of 11 Branches deliver daily throughout the UK & Ireland on our own fleet of vehicles. Ensuring we really are a National Company with a Local Service.



DGS Group Plc.

National Company. Local Service.

Contact Us:

DGS Group Plc.
Sycamore Road,
Trent Lane Industrial Estate,
Castle Donington,
Derby,
DE74 2NW.

Email: customerservice@dgsgroup.co.uk

Tel: 01332 811611

Twitter: @dgsgroupplc

Facebook: /dgsgroupplc

www.dgsgroup.co.uk